

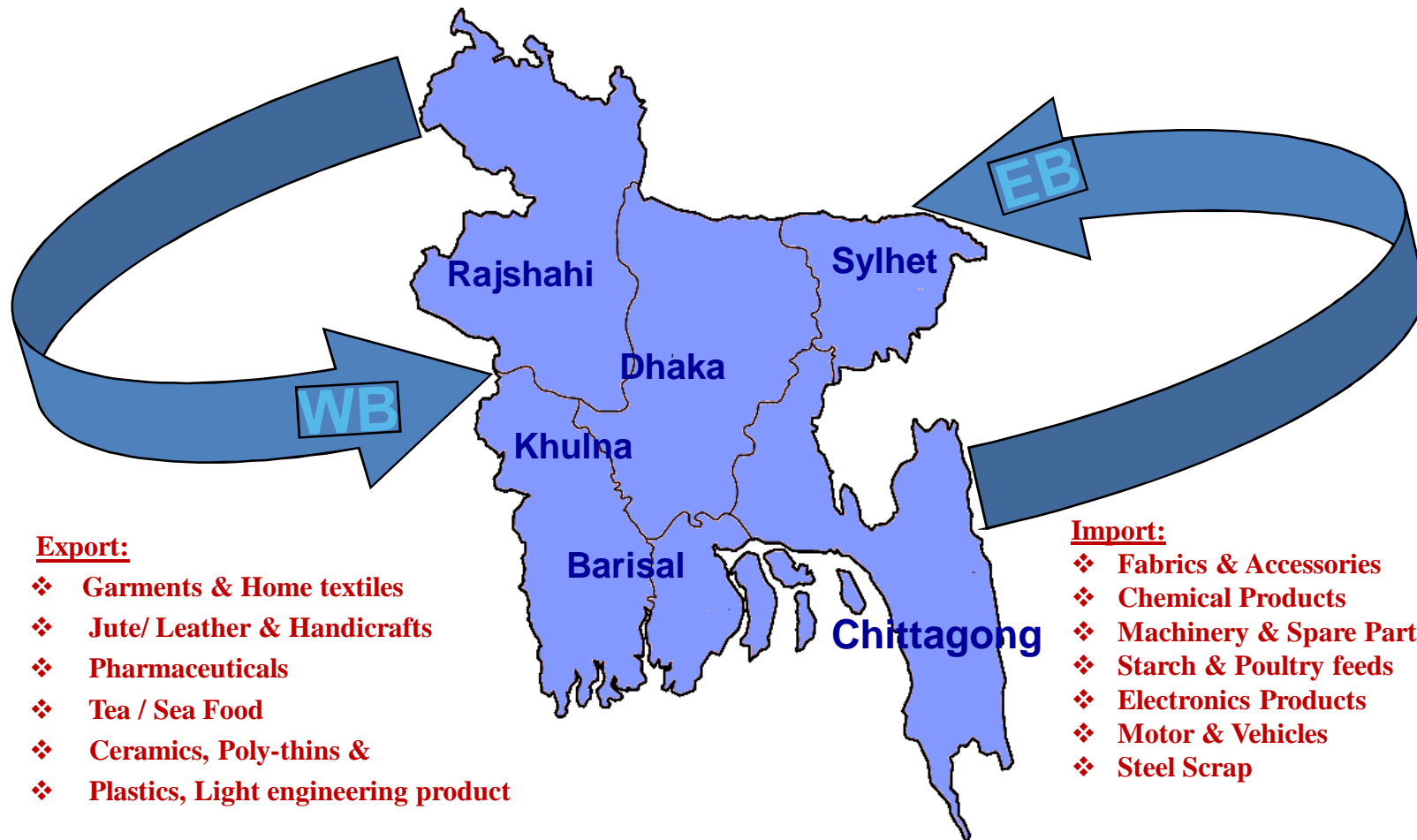
OVA FREIGHT



www.ova-bd.com

**Welcome
To
OVA Presentation**

Bangladesh Main Commodity Flow Europe



OVA FREIGHT

Industry & Business Concentration

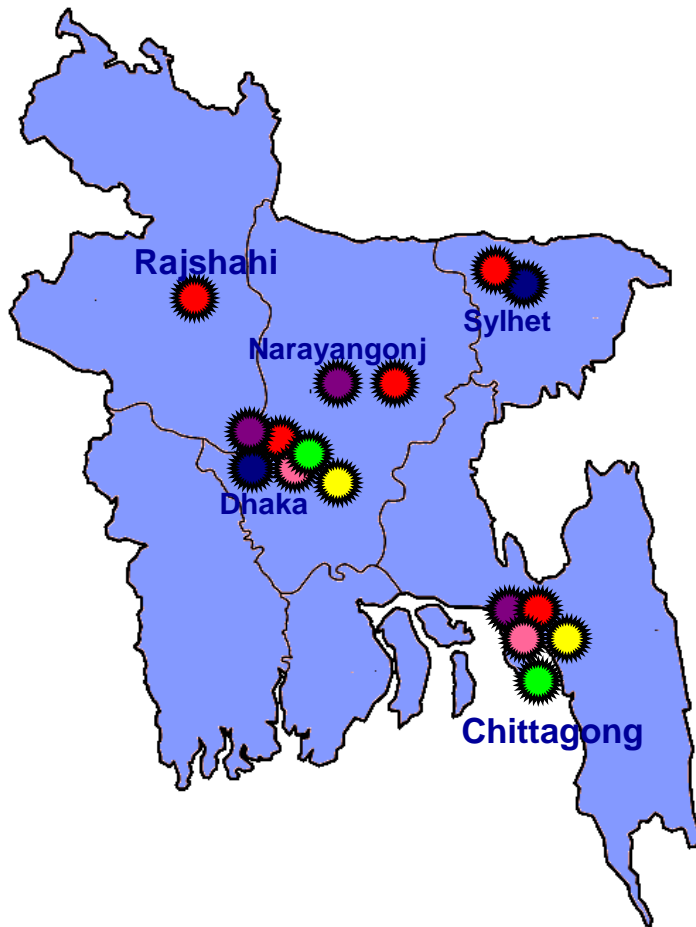


Industry

Business

 Air Freight

 Sea Freight



-  RMG/ Textile
-  Jute
-  Tea
-  Leather &
-  Handicrafts
-  Pharmaceuticals



OVA FREIGHT



OVA Services

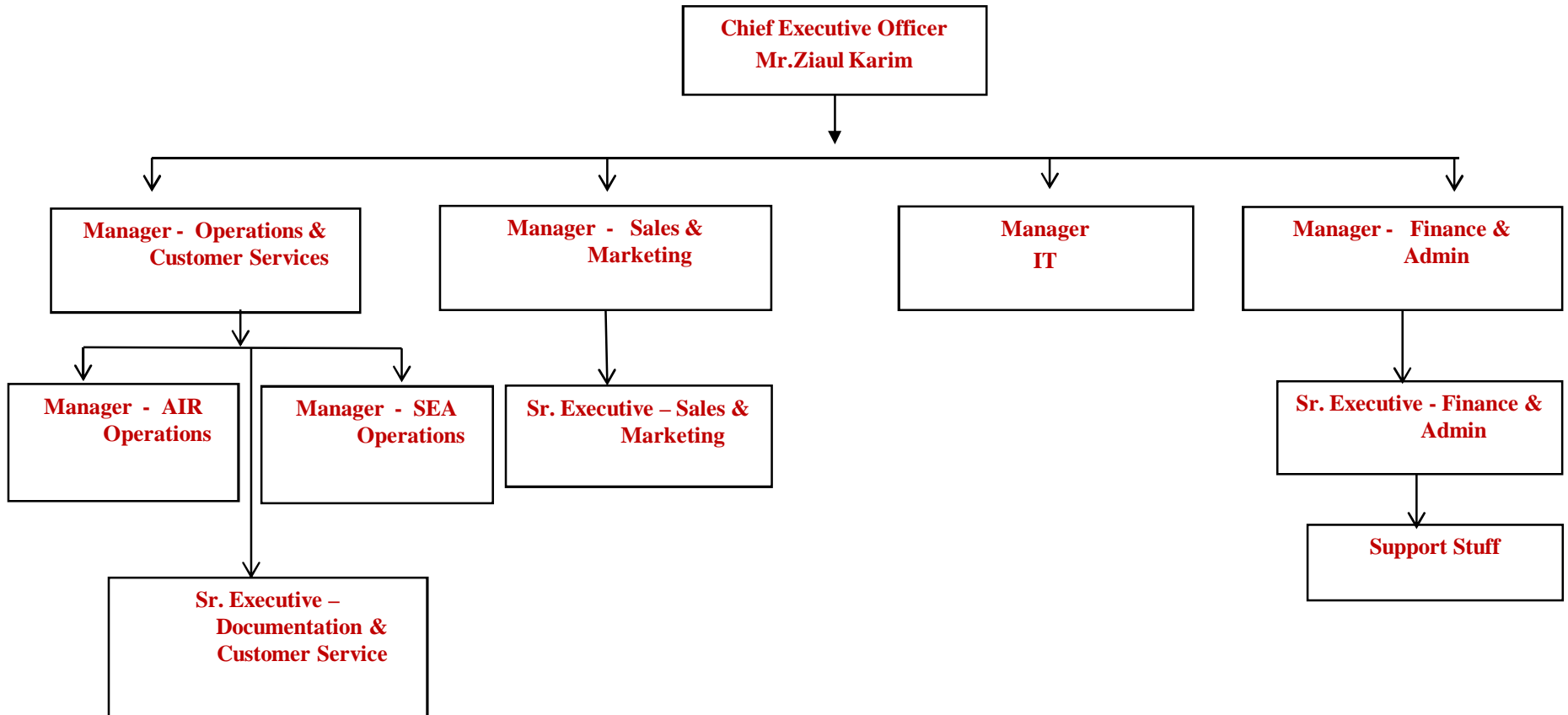
- ❖ Sea Freight Forwarding (Export & Import) for FCL & LCL.
- ❖ Air charter owner & cargo broker.
- ❖ Customs formalities (Export & Import).
- ❖ Transportation, Warehousing, storage and distribution management.
- ❖ Consolidation & Supply Chain Management.
- ❖ Air Freight Forwarding (Export & Import).
- ❖ Door To Door delivery Services.
- ❖ Local transport for collection and delivery.
- ❖ Customs transit.
- ❖ Trucking and haulage of containers.
- ❖ Road, rail, intermodal transportation in Bangladesh.
- ❖ Packing and lashing services.
- ❖ Insurance coverage services.
- ❖ Combined Air-Sea & Sea-Air Services.
- ❖ General, Dangerous and Hazardous cargo handling.
- ❖ Project Shipment Handling.



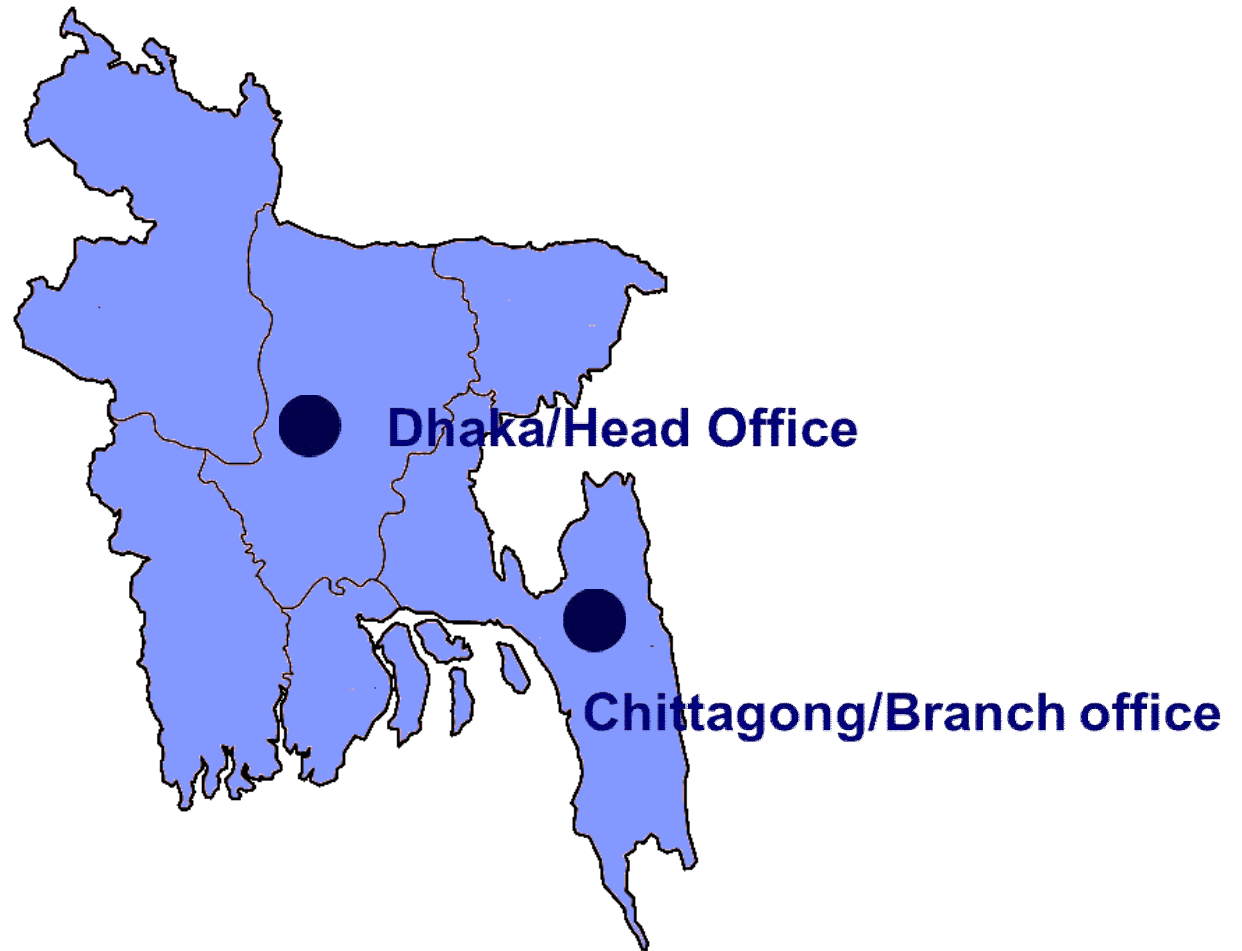
OVA FREIGHT



OVA Team



OVA Freight Office Locations



OVA FREIGHT



OVA Contact Details

Headquarter:

OVA FREIGHT
19/1 BABAR ROAD
BLOCK-B
MOHAMMAD PUR
DHAKA-1207
BANGLADESH.
PH:+88 015577 52 765
E-Mail: ova@ova-bd.com
Web: www.ova-bd.com

Branch office:

OVA FREIGHT
KHAN BUILDING
601 SK.MUJIB ROAD (2ND FLOOR)
CHOWMUHANI,
CHITTAGONG-4100
BANGLADESH.
PH: +88 015577 52 766
E-Mail: cgp@ova-bd.com
Web: www.ova-bd.com

Sea Freight

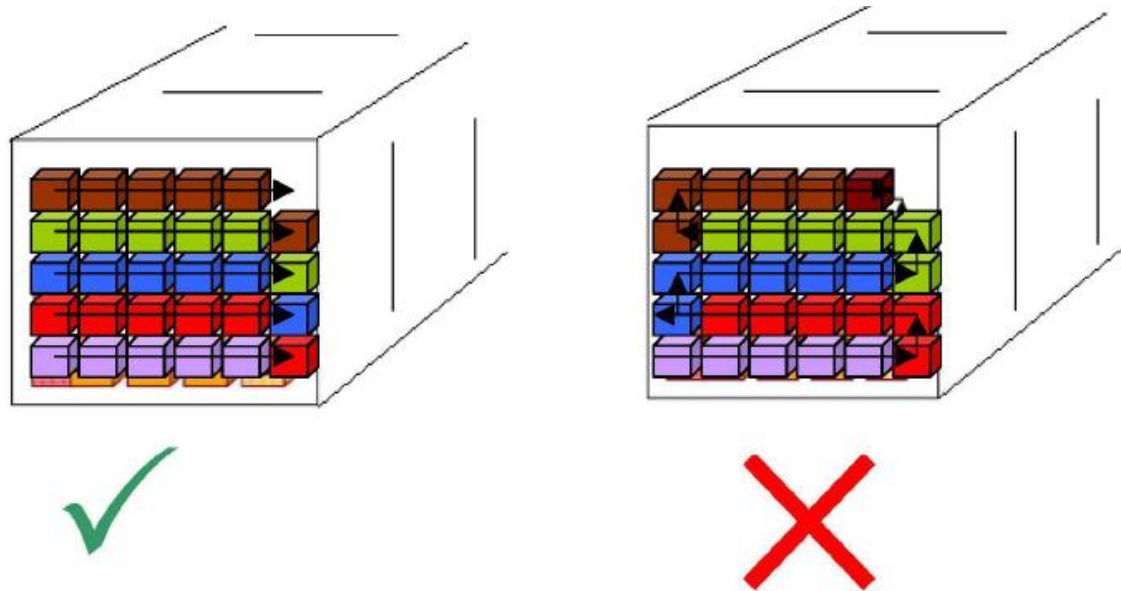
- ❖ **OVA Freight is one of the major operators in Bangladesh**
- ❖ **Sailings on various carriers via Singapore, Colombo, Port Kelang and Tanjung Pelapas**
- ❖ **Competitive rates covering “Port-to-Port” and “Door-to-Door” movements**
- ❖ **Product enhancements through barcode technology**
- ❖ **Handling at dedicated container freight stations**
- ❖ **Fixed Allocations on Core Carriers**
- ❖ **LCL: Weekly services**
- ❖ **Buyers Consolidation Service**
- ❖ **Dedicated LCL operational staff**



Consolidation

❑ Loading instruction:

❖ A. Loading in sequence per Palletize, PO, Style, Colour, Size wise per Carton Number.



Consolidation

❑ Loading instruction:

❖ B. Label must be facing the container door.



Consolidation

❑ Loading instruction:

❖ C. Carton Condition – No Wet, Bulge, Damage, Weak carton



Garments On Hanger (GOH)

The garment on hanger (GOH) container is designed to meet the needs of apparel shippers. Available in 20 feet and 40 feet lengths. GOH container hold apparel in a secure and easily transportable manner. Hanger Containers are used to load high-class clothes. It is a traditional fitment without alteration, connect the racks and poles by screws and nuts. The plastic cloth covers all inner sides, dryer hanged on every pole, dustproof portiere.



Sea-Air Product Features

- ❑ Time definite product / * Flown as booked with money-back guarantee
- ❑ 2 weekly sailings from Chittagong to Colombo and Dubai
- ❑ Track and trace visibility through systems and Web / Chat Apps
- ❑ Dedicated Sea-Air team in Dubai , Colombo and destinations



Sea-Air cartons for GOH

OVA FREIGHT



Sea-Air Service by OVA

Origins	Hub	Ocean TT	Hub TT	Air TT : EU	Total PTP
Chittagong	Dubai	15	0	1	16
	Colombo	05	1	2	08

Notes

- 1. Main EU gateway airports= LON/FRA/CDG/ROM/AMS . Other airports =+1-2 days
- 2. Ocean port to Airport transit times. CFS to Airport = +2 days
- 3. Transit times based on FCL



Sea Export Customs formalities

Required Documents:

- ❖ Commercial Invoice
- ❖ Packing List
- ❖ EXP Form
- ❖ Value Bond Form-9A (VBF-9A) signed by the Managing Director
- ❖ Copy of Master L/C (with transfer letter & advice) and BB L/C to be certified by Bank
- ❖ In case of local Fabrics a Certificate of Production from BTMA to be submitted along with GP-2 Gate Pass, Purchase Order & Delivery Challan etc.
- ❖ Utilization Declaration (UD) / Utilization Permission (UP) for imported Fabrics
- ❖ In case of imported fabrics Customs Passbook is required to be submitted to the Customs for reconciling the imported & exported quantity after 01 (one) month of shipment i.e. when duplicate Shipping Bill will be available at Customs from Jetty
- ❖ Copy of VAT Registration Certificate

Sea Port Infrastructure



Chittagong Port:

- ❖ Chittagong port became more organized during the last years.
- ❖ The vessel turn around time is now 48-72 hrs
- ❖ Export cargo is 90% CFS/CY business – CY/CY moves are very rare
- ❖ Chittagong port handles more than 90% of the containerized business
- ❖ No direct connections – all goods are shipped by feeder via Sin, Cmb, Tpp, Pkl
- ❖ Fixed feeder sailings – Some carrier are trying to put this.
- ❖ Most operational activities are handled in private Off-docks (CFS), which are outside the port.

Improvements:

- ❖ New terminal
- ❖ Additional space for storage of empty equipment
- ❖ Privatization: gantry crane operation, yard management
- ❖ Fight corruption and ancient handling practices
- ❖ Vision: Deep sea port (by 2050)

OVA Freight CFS

Ocean Trade

- ❑ Own space in CFS :
 - ❖ EBIL(Esack Brothers Industries Limited.)
 - ❖ OCL(Ocean Container Line.)
 - ❖ GCL (Golden Containers Ltd)
 - ❖ Fisco
 - ❖ K N T Logistics
- ❑ Common Space:
 - ❖ ICD, Kamalapur, Dhaka
- ❑ Common Space in all other CFS
- ❑ AEO-2008 & C-TPAT compliant .
- ❑ 24 hours security system
- ❑ CCTV Cameras
- ❑ Battery operated forklift
- ❑ Fumigation
- ❑ The CFS are just alongside the port area and in on time container can be sent to the hook point of vessel



Container Freight Station(CFS)–Chittagong Port

Services:

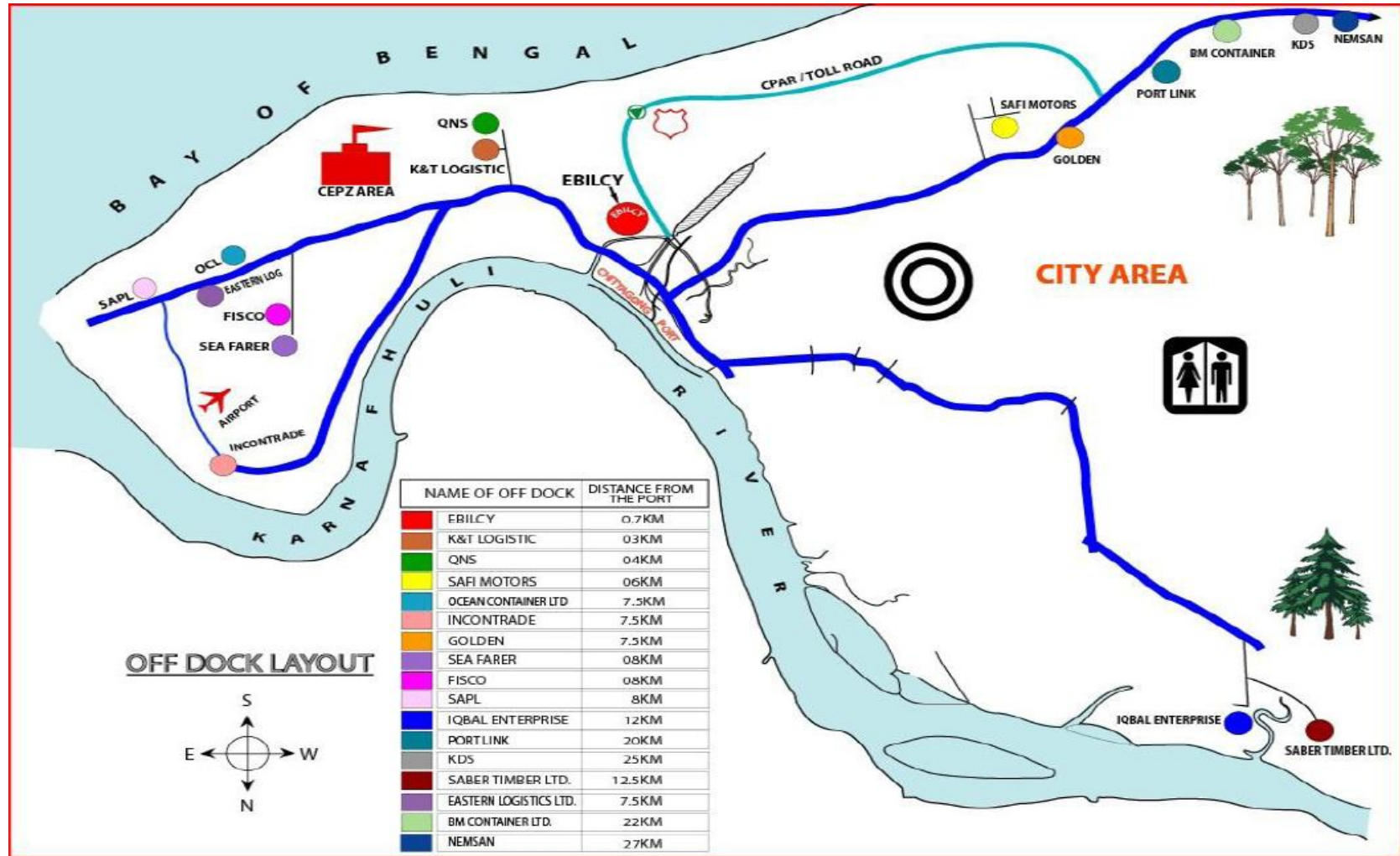
- ❖ Palletization on card board, plastic or wooden pallets
- ❖ Electronic cargo humidity check prior loading
- ❖ Automatic shrink wrapping & strapping
- ❖ Garment-On-Hanger (GOH)
- ❖ Customized loading
- ❖ Pick & Pack
- ❖ Fumigation



OVA FREIGHT



Distance Map between all CFS to Chittagong Port



OVA FREIGHT



Container Freight Station(CFS)–Chittagong Port



OVA FREIGHT



Container Freight Station(CFS)–Chittagong Port



Air Freight

- ❖ Service Contracts with All Major Carriers operating in Bangladesh
- ❖ Vast Experience in Handling Charter Operations
- ❖ Capable to handle huge volumes in the Peak Season
- ❖ IATA trained staff
- ❖ Express Cargo Handling
- ❖ Sea-Air Cargo Handling
- ❖ Experienced on Site Staff at Dhaka Airport (24/7)
- ❖ Common space warehouse at the Cargo Village
- ❖ Electronic Billing and Documentation System
- ❖ 7 Days Free Storage for Export Cargo
- ❖ Emergency Contacts available 7 Days per Week
- ❖ Additional Warehouse Capacities close to the Airport



OVA FREIGHT



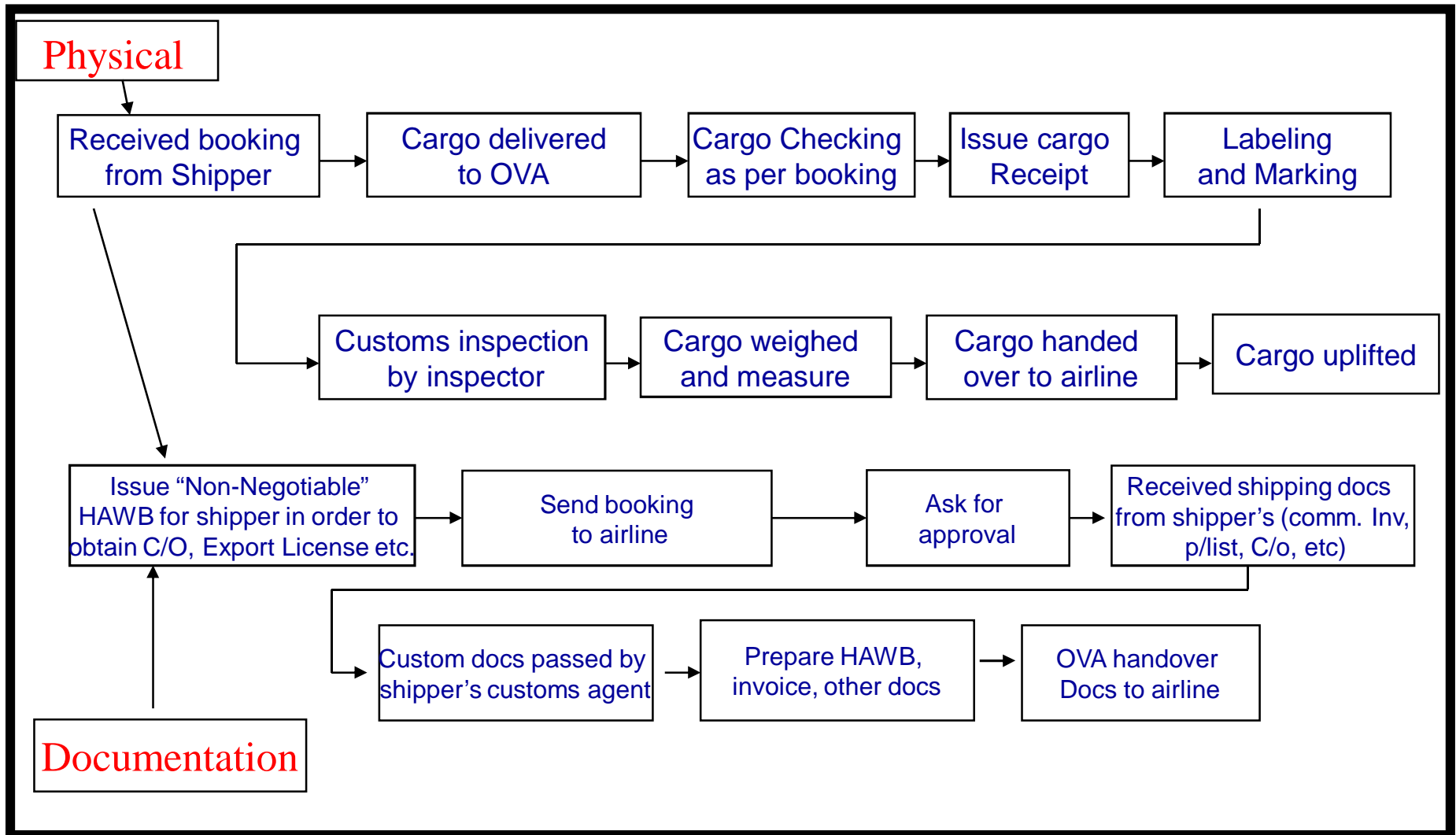
Air Port Infrastructure



- ❖ **International Airports: Dhaka and Chittagong**
- ❖ **National Flag Carrier Biman Bangladesh**
- ❖ **Middle East Airlines dominate the market (Emirates, Qatar, Saudia, Etihad)**
- ❖ **No direct passenger flights to Europe & USA**
- ❖ **Regular cargo flights re-established by QR, SV, AF, EK, EY, CX, SQ**
- ❖ **Peak Season: charter flights may be arranged on demand**

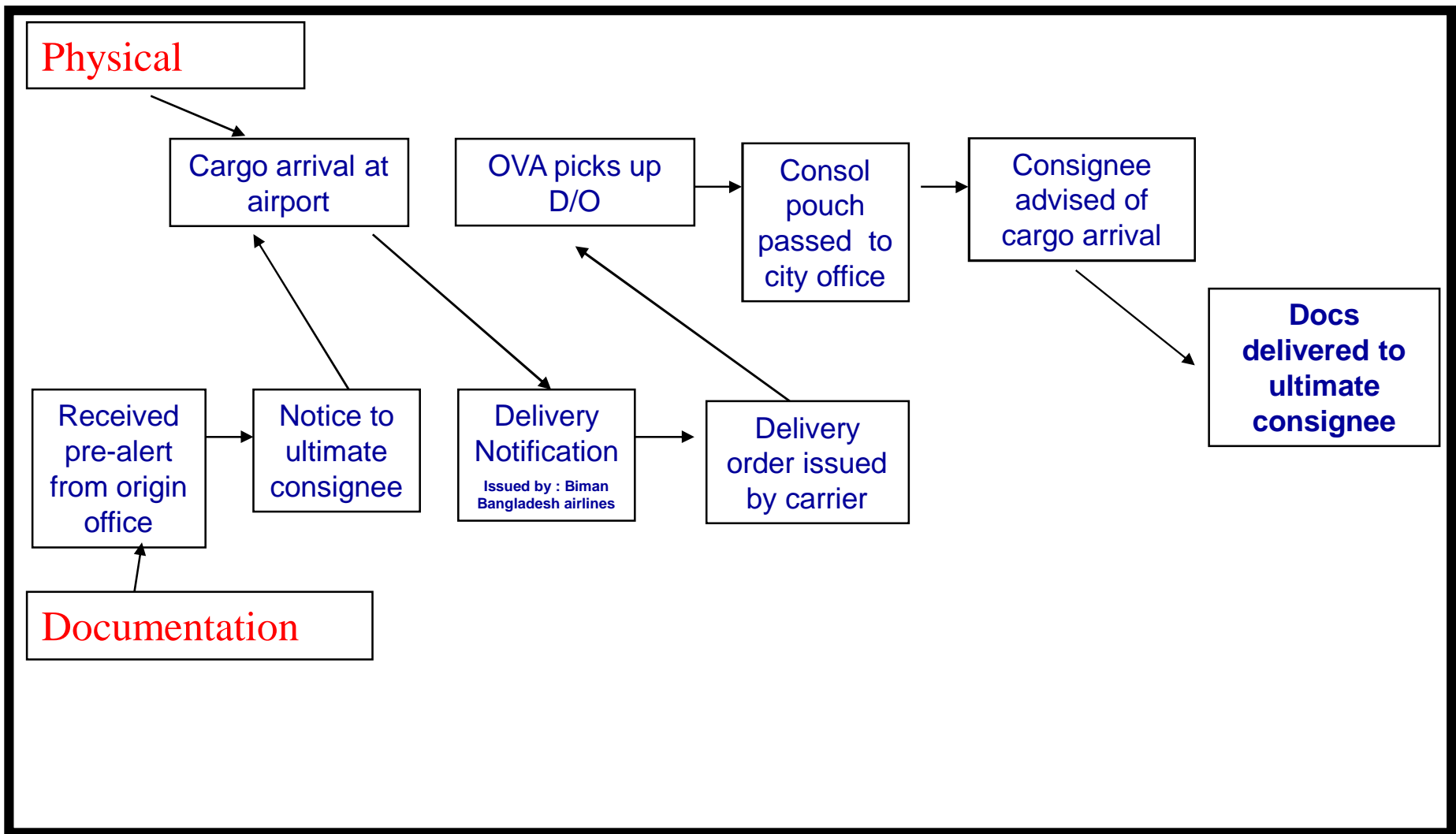
OVA FREIGHT

Air Export Flow



OVA FREIGHT

Air Import Flow



Custom clearance time & documentation requirements

1. Air Export Formalities:

- ❖ Clearing time: 1 working day
- ❖ Required documents: Export L/C or contract, Invoice, Packing list, Export Permit, Vat reg. copy, U/D & Customs Passbook.

2. Air Import Formalities:

(Readymade Garments e.g. Fabrics, others accessories):

- ❖ Clearing Time: 2 working days
- ❖ Required Documents: Import L/C, LCA, Export L/C, Invoice, Packing list, Pro-forma invoice, Insurance documents, Bank Authorization, Vat reg. copy, Consignee authorization, (U/D & Customs Passbook, General Bond, Bond License for if Tax free delivery under Bond facility for 100% Export oriented industry)

Carrier, Routing and Lead Time for Air Cargo

A. Service:

- ❖SQ: Dhaka - Singapore - Copenhagen - Billund
- ❖EK: Dhaka - Dubai - Frankfurt – Copenhagen - Billund

B Service:

- ❖TG: Dhaka - Bangkok – Copenhagen – Billund
- ❖SV: Dhaka – Brussels – Copenhagen – Billund

Lead times:

A. Service:

- ❖SQ/EK = 3 to 4 days ex DAC to CPH (apt to apt)
- ❖SQ/EK = 4 to 5 days ex DAC to BLL (apt to apt)

B. Service:

- ❖TG/SV = 6 to 8 days ex DAC to CPH (apt to apt)
- ❖TG/SV = 7 to 9 days ex DAC TO BLL (apt to apt)



OVA Freight CFS

Air Trade

- ❑ Only one CFS for air shipment
❖ Cargo Village, Dhaka airport
- ❑ AEO-2008 & C-TPAT compliant .
- ❑ 24 hours security system
- ❑ The CFS are just alongside the air port



OVA FREIGHT



Thank You

www.ova-bd.com